



COOPI PRESENCE IN THE COUNTRY

Since 2016, COOPI has been present in Syria, where it has implemented protection interventions as well as projects to promote food security and agricultural production, education and early recovery in the rural areas of Damascus, Dara'a, Hama, Homs, Raqqa, Latakia and Aleppo.

In 2017, COOPI started its first intervention in FSL and WASH in Qatana, in the rural area of Damascus, funded by AICS. In 2018, COOPI launched a protection programme in Aleppo funded by UNHCR to provide support to people with special needs – namely elderly, children and disabled. It also promoted a life-saving food assistance and agricultural production support intervention at household level, funded by ECHO and OCHA, targeting returnees from Eastern Ghouta.

In Syria, COOPI also provided educational and psychosocial support to children in Aleppo and Rural Damascus, to reduce school drop-out and promote their well-being.



SECTORS IN WHICH COOPI HAS WORKED IN THE COUNTRY



PROTECTION



EDUCATION IN
EMERGENCY



HUMANITARIAN
ASSISTANCE



ECONOMIC
DEVELOPMENT



FOOD SECURITY
AND LIVELIHOODS



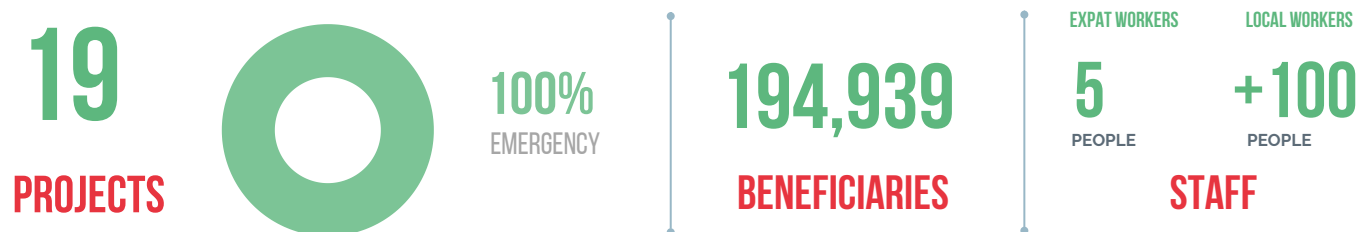
WASH

COOPI IN SYRIA TODAY

In Syria, COOPI implements **emergency and early recovery projects**, in coordination with the local authorities and national and international organisations. COOPI is currently promoting the **transition** from emergency response toward more **sustainable and lasting development processes**. COOPI operates in the Governorates of **Aleppo, Lattakia, Raqqa, Dara'a, Homs, Hama** and **Rural Damascus**, where basic services are limited and IDPs and returnees populations are in high need.

In 2023 COOPI responded to the earthquake in **Aleppo, Lattakia** and **Hama**.

To date, COOPI continues working in the sectors of **Food Security and Livelihoods, Agriculture, Early Recovery, Education and Protection**, for the benefit of vulnerable groups, including women headed households, children, people with disabilities and elderly.



SECTORS IN WHICH COOPI OPERATES IN THE COUNTRY



PROTECTION



EDUCATION IN EMERGENCY



HUMANITARIAN ASSISTANCE



HEALTH



ECONOMIC DEVELOPMENT

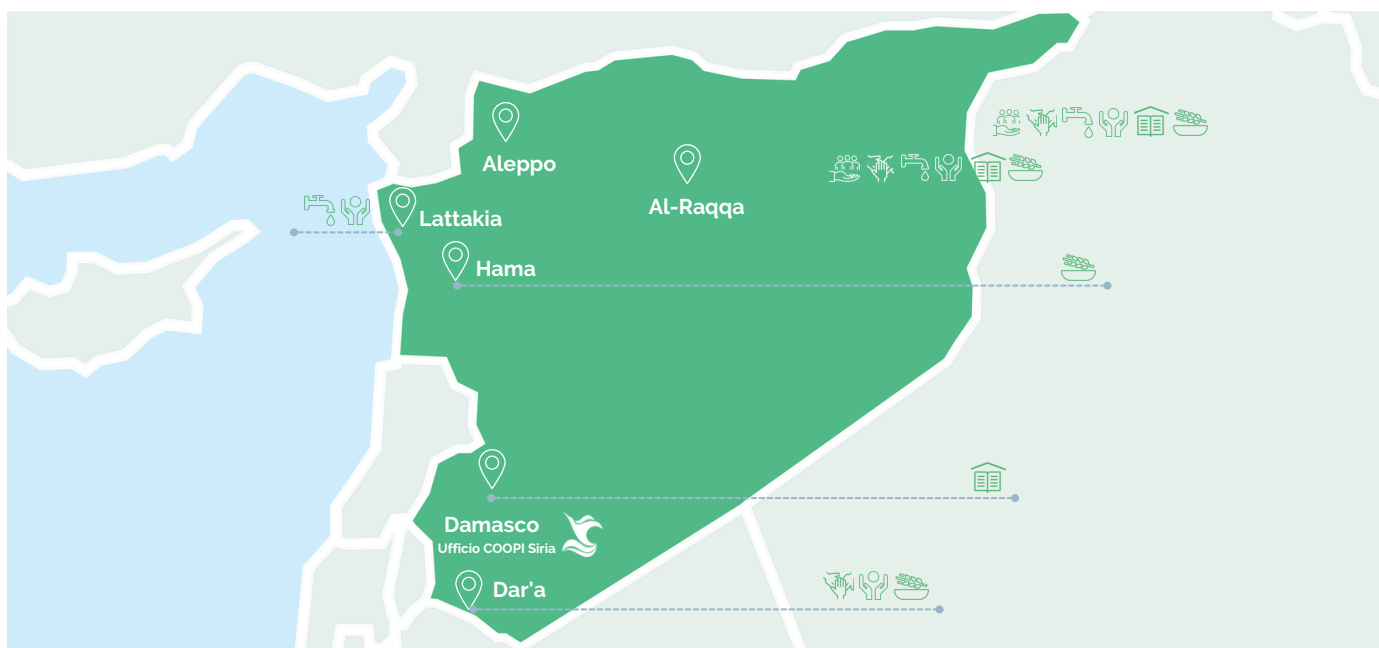


FOOD SECURITY AND LIVELIHOODS



WASH

COOPI is currently present in Syria in the Governorates of Aleppo, Rural Damascus, Dar'a, Hama, Homs, Lattakia, and Al-Raqqa. The country office is located in Damascus, while operational bases are located in Aleppo and Hama.



MAIN AREAS OF INTERVENTION



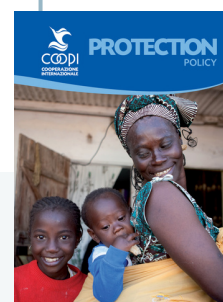
PROTECTION

In response to the Syrian crisis, COOPI promotes Protection activities, to support the most vulnerable people, severely traumatised by the conflict, namely women heads of household left alone to care for their children, disabled and elderly.

In this area, COOPI implements several activities, including:

- PSYCHOSOCIAL SUPPORT, BOTH WITH MOBILE UNITS AND COMMUNITY CENTRES, ESPECIALLY AIMED AT WOMEN AND CHILDREN;
- ACCOMPANYING THOSE NEEDING PSYCHOLOGICAL SUPPORT, THROUGH 'CASE MANAGEMENT' AND SUPPLY OF SPECIALIZED AND QUALITY SERVICES, SUCH AS THOSE PROVIDED BY THERAPISTS;
- REACTIVATION OF SOCIAL PROTECTION MECHANISMS;
- SUPPLY OF NFI MATERIALS, AND MEDICAL DEVICES;
- AWARENESS CAMPAIGNS AND COMMUNITY LED INITIATIVES

2024:
6
 PROJECTS
116,457
 BENEFICIARIES



READ MORE ABOUT **PROTECTION POLICY**:
WWW.COOPI.ORG/PROTECTION-POLICY



EDUCATION IN EMERGENCY

COOPI promotes education in emergency in Syria mainly by:

- SUPPORTING STUDENTS IN STUDYING AND CATCHING UP ON THEIR SCHOOL YEARS;
- DISTRIBUTING SCHOOL SUPPLIES;
- PROVIDING LIGHT REHABILITATION OF DAMAGED SCHOOLS;
- PROVIDING PSYCHOSOCIAL SUPPORT
- ENGAGE FAMILIES TO INCREASE STUDENT'S ATTENDANCE

2024:
2
 PROJECTS
3.636
 BENEFICIARIES



READ MORE ABOUT THE APPROACH AND METHODOLOGIES APPLIED:
EDUCATION IN EMERGENCY POLICY
WWW.COOPI.ORG/EIE-POLICY

MAIN AREAS OF INTERVENTION



FOOD SECURITY

After more than 14 years of conflict, poverty is affecting more and more people in many parts of Syria. In this respect, COOPI promotes Food Security and agriculture, by implementing several activities, including:

- LIFE-SAVING FOOD ASSISTANCE BY DISTRIBUTING FOOD PARCELS;
- DISTRIBUTION OF UNCONDITIONAL AND CONDITIONAL FOOD VOUCHERS (CASH FOR WORK);
- SMALL-SCALE FARMING AND LIVESTOCK ACTIVITIES REINFORCEMENT AT FAMILY LEVEL, MAINLY BY DISTRIBUTING AGRICULTURAL KITS AND PROMOTING TECHNICAL TRAINING.

TO PROMOTE FOOD SECURITY, COOPI ADOPTS AN INTEGRATED APPROACH.

READ MORE ABOUT

FOOD SECURITY POLICY: WWW.COOPI.ORG/FOODSEC-POLICY

2024:
3
PROJECTS
20,339
BENEFICIARIES



NETWORK IN SYRIA

SECTORS IN WHICH COOPI PARTICIPATES

Cash Working Group • Early Recovery and Livelihood • Education • Food and Agriculture Security • Protection sectors and AoRs (Child Protection, GBV, Mine Action)

INSTITUTIONS WITH WHICH COOPI COORDINATES

HAC, Line Ministries (Agriculture, Social Affairs and Labour, Education) and the Syrian Arab Red Crescent (SARC)

COOPI INTERNATIONAL PARTNERS

ICU

COOPI DONORS

COOPI ACTIVITIES IN SYRIA ARE CURRENTLY FUNDED BY:



International
Labour
Organization



COOPI DEVELOPMENT LINES IN SYRIA

COOPI main areas of intervention in Syria in the near future will be:

- **Protection**, by focusing on strengthening community centres to provide more and more access to specialised therapies and information campaigns on mental health, legal and psychosocial assistance, prevention of violence and abuse against women and children;
- **Food Security and agriculture** with a focus on food diversification and access to livelihoods for the most vulnerable communities;
- **Education** with a focus on informal education activities, including improvements to school facilities and teachers training.

Early Recovery will also be among the areas of intervention that COOPI aims to strengthen over the next few years in Syria. Its focus will be on creating more sustainable network opportunities and promote the resilience of the most vulnerable communities and groups.



READ MORE ABOUT COOPI PROJECTS IN SYRIA

WWW.COOPI.ORG/SYRIA



COOPI - SYRIA
MALKI, 7 JADET AL BEZEM 4065/8, DAMASCUS



HOM.SYRIA@COOPI.ORG



COOPI - COOPERAZIONE INTERNAZIONALE
VIA F. DE LEMENE 50 - 20151 MILAN- ITALY



COOPI@COOPI.ORG