



COOPI PRESENCE IN THE COUNTRY

COOPI started its activities in Ecuador in 1967, acquiring extensive and significant experience and knowledge of this country and its diverse territorial realities, adapting its actions over time to the needs of the most disadvantaged populations. This has allowed COOPI to become a point of reference and a strategic partner for local authorities and the numerous civil society organisations with which it systematically collaborates in the implementation of projects.

Since the 1990s, the organization has intervened with **emergency projects** in the field of **disaster risk reduction**, particularly **environmental disasters**, by providing assistance to communities affected by volcanic eruptions, landslides, and floods. It has also collaborated with institutions, research organizations, and civil society to strengthen local capacities for preparedness and response to such events, such as the devastating earthquake that affected the communities of the provinces of Manabí and Esmeraldas in 2016.

At the same time, COOPI has developed programs supporting small artisans and Afro-Ecuadorian women. Since 2006, it has also implemented projects related to migration to support the integration of Colombian migrant populations in the northern border area.

FROM 1967 TO 2024:

98
PROJECTS

50%
DEVELOPMENT



50%
EMERGENCY

1,121,800
BENEFICIARIES

SECTORS IN WHICH COOPI OPERATED IN THE COUNTRY



FOOD
SECURITY AND
LIVELIHOODS



TRAINING



HEALTH



WASH



PROTECTION



DISASTER RISK REDUCTION
(DRR) / DISASTER
PREPAREDNESS (DP)



GOVERNANCE/CIVIL
SOCIETY/HUMAN
RIGHTS



ECONOMIC
DEVELOPMENT



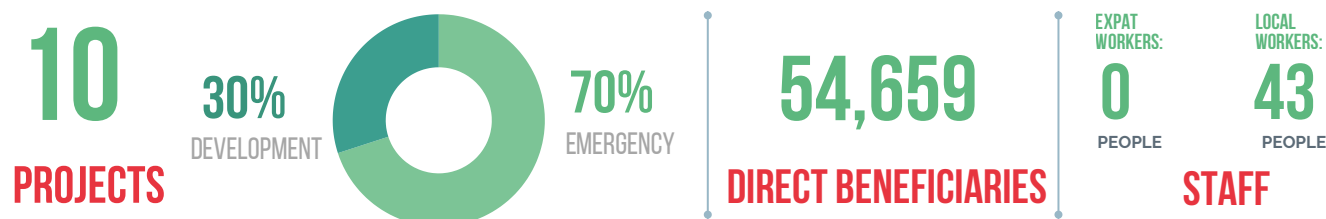
MIGRATION

COOPI IN ECUADOR TODAY

In recent years, several Latin American and Caribbean countries where COOPI operates have been facing a **humanitarian crisis** that has resulted in more than 6 million **Venezuelan refugees and migrants**.

Ecuador - considered the third largest receiving country - has become one of the **main destination countries for migratory flows** from Venezuela. Since 2020, COOPI has been working in Ecuador with a **multisectoral approach**, focusing on areas such as **housing, protection of children and adolescents, livelihoods and socioeconomic integration**, as well as **access to water, sanitation, and hygiene (WASH)**. In **El Oro, Guayas and Sucumbios**, interventions have been key in these sectors, also covering **sociocultural integration and community protection**. In Chimborazo, Manabí, Esmeraldas, Imbabura, and Carchi, work has focused on areas such as **WASH, child protection** and the **promotion of popular and solidarity economy**. In **Azuay**, the activities have focused on **the culture of peace and socio-cultural integration**.

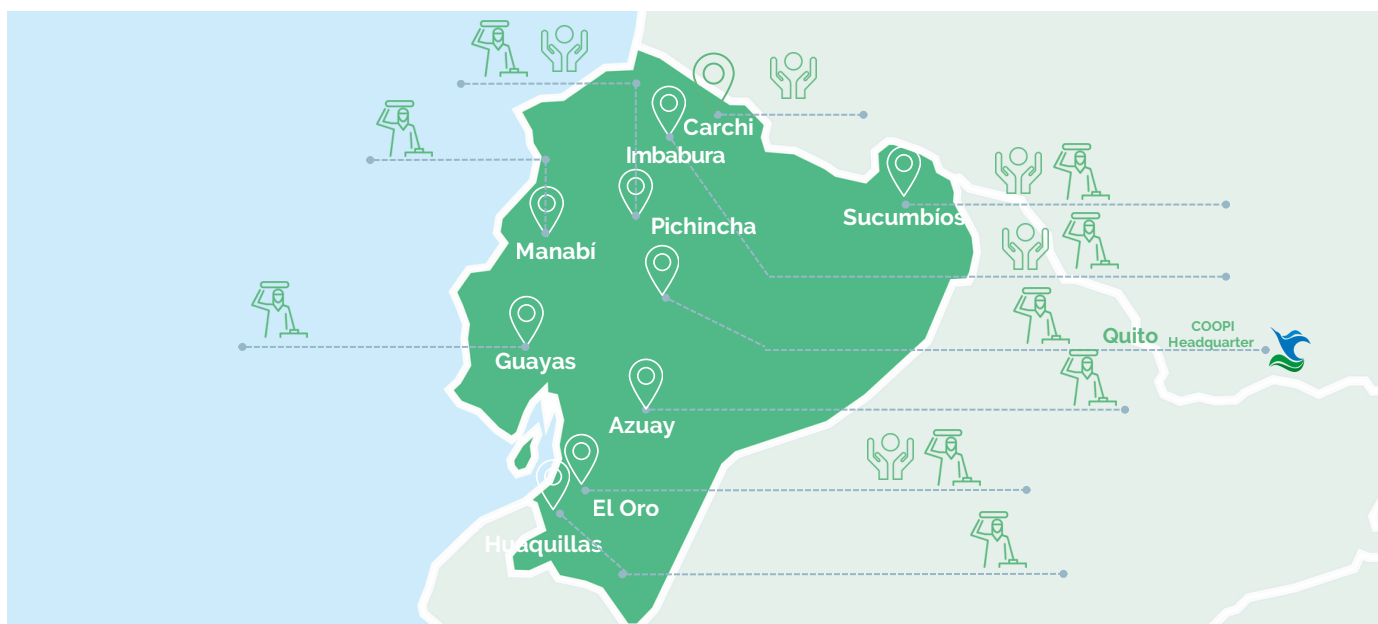
COOPI's interventions benefit both the population in human mobility and the host communities, with special attention to the most vulnerable groups. COOPI also has resources for **knowledge management and innovation**, through the use of **virtual learning environments** and **humanitarian management systems**, such as the **Human Rights Classroom**. In addition, COOPI is a member of the regional coordination platform **R4V** ("Plataforma Regional de Coordinación Interagencial para Refugiados y Migrantes") joined by more than 200 international NGOs in order to create an effective and coordinated network of response to the Venezuelan crisis.



SECTORS IN WHICH COOPI OPERATES IN THE COUNTRY



COOPI currently has a presence in Ecuador in the provinces of El Oro, Azuay, Guayas, Manabí, Sucumbios, Carchi, Imbabura, Huaquillas and Pichincha. The headquarters of COOPI in Ecuador is located in Quito.



MAIN AREAS OF INTERVENTION



MIGRATIONS

As part of its management of the Venezuelan crisis, COOPI aims to improve the well-being of Venezuelan migrants and refugees in Ecuador while strengthening their integration into host communities. Specifically, COOPI promotes:

- THE ACTIVATION OF RAPID RESPONSE MECHANISMS FOR THE NEEDS OF "POPULATIONS ON THE MOVE.";
- TRAINING PATHWAYS IN SOFT SKILLS, TECHNICAL SKILLS AND AIMED AT ENTREPRENEURSHIP AND EMPLOYABILITY;
- STRENGTHENING OF COMPREHENSIVE PROTECTION SYSTEMS FOR CHILDREN, ADOLESCENTS, AND THEIR FAMILIES IN CONDITIONS OF HUMAN MOBILITY;
- TRAINING OF ADOLESCENTS AND YOUNG PEOPLE AS COMMUNITY PROMOTERS FOR THE DEFENSE OF RIGHTS AND THE STRENGTHENING OF THE SOCIAL FABRIC;
- ADAPTATION OF COMMUNITY CENTERS, TEMPORARY SHELTERS AND SUPPORT CENTERS, WITH MANAGEMENT MODELS FOR EACH SPACE;
- PROMOTE A CULTURE OF PEACE THROUGH CULTURAL AND ARTISTIC ACTIVITIES.

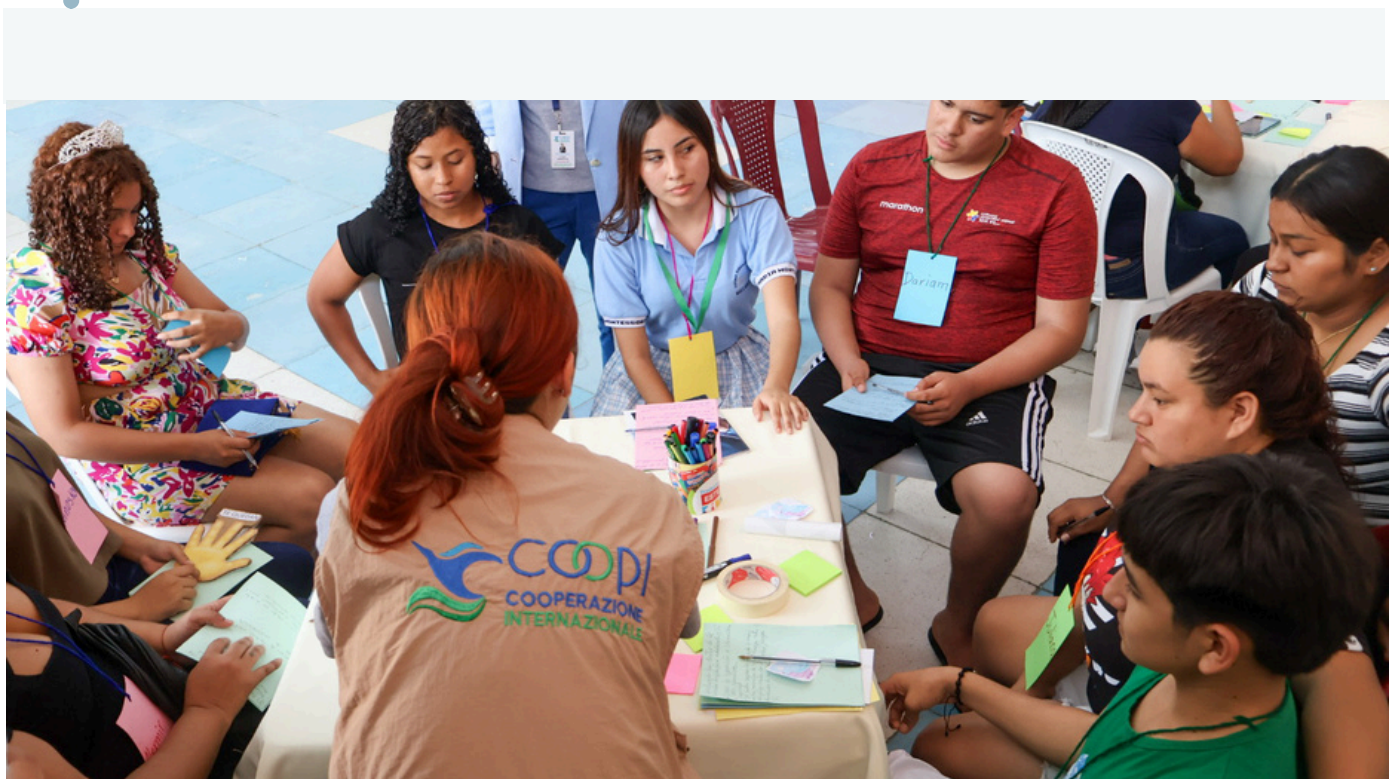
2024:

8

PROJECTS

38,995

BENEFICIARIES



MAIN AREAS OF INTERVENTION

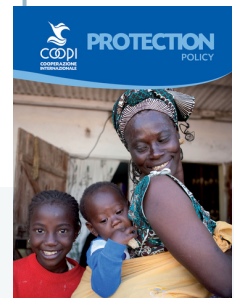


PROTECTION

COOPI integrates a comprehensive protection approach into all of its interventions, and in Ecuador, it includes a key component of protection for populations in vulnerable conditions, with an emphasis on children, adolescents, and those in human mobility, as well as host communities. The protection activities focus on providing socio-legal support for access to essential rights and promoting citizen participation; thus we work to:

- SOCIALIZE KEY INFORMATION FOR CHILDREN, ADOLESCENTS AND THEIR FAMILIES REGARDING ACCESS TO ESSENTIAL SERVICES AND RIGHTS;
- PROVIDE LEGAL ADVICE AND SOCIAL SUPPORT FOR COMMUNITY INTEGRATION AND ACCESS TO SERVICE;
- PROVIDE FINANCIAL ASSISTANCE FOR THE REGULARIZATION OF THE MIGRATION STATUS OF CHILDREN, ADOLESCENT AND THEIR FAMILIES;
- PROMOTE THE PARTICIPATION OF CHILDREN AND ADOLESCENTS IN COMMUNITY SPACES;
- TRAIN COMMUNITY ACTORS IN THE PREVENTION OF CHILD SEXUAL ABUSE.

2024:
3
 PROJECTS
5,850
 BENEFICIARIES



READ MORE ABOUT : **PROTECTION POLICY**

WWW.COOPi.ORG/UPLOADS/HOME/15A7302DD14D77.PDF



MAIN AREAS OF INTERVENTION

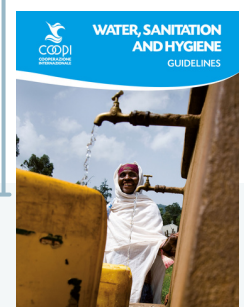


WASH

COOPI has extensive experience both globally and locally in Ecuador in the implementation of interventions related to the Water, Hygiene and Sanitation (WASH) component. These actions have been developed in coordination with other key approaches such as human mobility, education, health and nutrition, with the aim of improving the living conditions of children, adolescents and their families in vulnerable situations. To achieve this purpose, the following interventions have been carried out:

- IMPROVEMENT OF WATER, HYGIENE AND SANITATION INFRASTRUCTURE IN LARGE-SCALE CARE SPACES FOR VULNERABLE POPULATIONS IN PUBLIC INSTITUTIONS;
- IMPLEMENTATION OF HYDRATATION POINTS ALONG MIGRATION ROUTES TO PROVIDE ACCESS FOR PEOPLE IN TRANSIT OR THOSE PLANNING TO STAY;
- REINFORCEMENT AND MAINTENANCE OF WELLS IN POTABLE WATER SYSTEMS;
- IMPLEMENTATION OF UNICEF'S RESILIENT SCHOOLS METHODOLOGY IN EDUCATIONAL INSTITUTIONS TO IMPROVE WASH SERVICES WITH A FOCUS ON CLIMATE RESILIENCE.

2024:
1
 PROJECTS
9,814
 BENEFICIARIES



READ MORE ABOUT : **WATER, SANITATION AND HYGIENE POLICY**
WWW.COOPI.ORG/WASH-POLICY



COOPI NETWORK

CLUSTERS IN WHICH COOPI PARTICIPATES

Protection Working Group and Child Protection and Gender Violence Subgroup • Socioeconomic Integration Working Group • Humanitarian Aid • Migration • Shelter/Habitability • WASH

INSTITUTIONS WITH WHICH COOPI COOPERATES

Association of Ecuadorian Municipalities • National Council for Equality in Human Mobility • National Corporation for Popular and Solidarity Finance - CONAFIPS • Ministry of Economic and Social Inclusion - MIES • Ministry of Education • Ministry of Foreign Affairs and Human Mobility • Ministry of Public Health • National Secretariat for Risk Management • Consortium of Provincial Autonomous Governments of Ecuador - CONGOPE • Ombudsman's Office • Ministry of Women

COOPI NATIONAL AND LOCAL PARTNERS

AQUANUNA • SOLIPSISART • ÚTERO FILMS • FUNDER • CÁMARA DE COMERCIO A NIVEL NACIONAL • FUDELA • ALAS DE COLIBRÍ • INSTITUTO IBEROAMERICANO DE PATRIMONIO NATURAL Y CULTURAL • FUNDACIÓN AZULADO • UNIVERSIDADES A NIVEL NACIONAL

COOPI INTERNATIONAL PARTNERS

AVSI • RIKOLTO

COOPI DONORS

COOPI ACTIVITIES IN ECUADOR ARE CURRENTLY FUNDED BY:



COOPI DEVELOPMENT LINES

COOPI's priority areas of intervention in the near future in Ecuador will remain:

- **Protection and Community Participation**, with a focus on the prevention of rights violations, socio-legal support and assistance for migration regularization. Local systems for the protection of rights are strengthened in response to the needs of children, adolescents, women, and host communities. Organizational and participation processes for children, adolescents, and young people are also promoted, based on training and awareness-raising with a focus on gender, territorial, and human rights perspectives;
- **Socio-economic Integration and productive development**, promoting the creation of sustainable livelihoods through training programs, technical support and training in soft and technical skills. In addition, the productive sector is strengthened through the development of value chains in agri-food companies, SMEs and MSMEs, driving economic recovery;
- **WASH**, strengthening access to safe water, hygiene and sanitation systems in public institutions, strategic access points for the population in human mobility, educational institutions and community water systems in particularly vulnerable areas.



LEARN MORE ABOUT COOPI'S PROJECTS IN ECUADOR

WWW.COOPI.ORG/EN/COUNTRY/ECUADOR.HTML



COOPI – ECUADOR

AV. REPÚBLICA DEL SALVADOR N34- 165 Y MOSCÚ,
EDIFICIO DYGOIL, OFICINA 2B, QUITO, 170102



COORD.ECUADOR@COOPI.ORG



COOPI - COOPERAZIONE INTERNAZIONALE

VIA F. DE LEMENE 50 - 20151 MILANO - ITALIA



COOPI@COOPI.ORG